



Ride

2019 APPAREL



At RSD we're always looking to improve our products which is no easy task. Our aim is better leather, better protection and better build quality and if we can keep the price in the ball park, then it ends up being less expensive to the customer in the end. The new collection is exactly that and a little more. We've taken the classics, the Ronin and Clash and added CE1 level protection and construction with the same style and improved build quality taking our bestselling jackets to another level.

The heritage portion of the collection remains true to the DNA of the brand but comes with the added features of included removable armor and strategic ventilation without compromising the wear ability. We remain true to the focus of on bike function and off bike wear ability. Clean, stylish, subtly branded riding gear, it's what we expect and what we deliver.

Times may change, but the details of what make a quality motorcycle jacket worth owning do not. Quality, comfort, fit, finish, protection and style. It's a recipe that gets better in time if you stay true to your roots, learn from your customers and work to improve on what you have learned.

Industry shaping designs like the Clash and Ronin are a tough product to improve on, but that's what we've done with the RS Signature models.

We realize not everybody wants to wear the same gear, so we've further expanded both our textile range and leathers to bring more diversity to the collection, always keeping function and form in mind. Weather we've turned a classic bomber into a rider's jacket or added a hood to a classic leather silhouette it's quality first.

Roland Sands

www.rolandsands.com



Roland Sands Design

CONTENTS

- 4 MATERIALS, TRIMS AND CONSTRUCTION
- 6 MEN'S LEATHER JACKETS
- 15 MEN'S TEXTILE JACKETS
- 30 MEN'S TECHNICAL LIFESTYLE
- 34 MEN'S GLOVES
- 39 MEN'S FOOTWEAR
- 42 ACCESSORIES
- 47 CASUALS
- 51 WOMEN'S LEATHER JACKETS
- 58 WOMEN'S GLOVES
- 60 WOMEN'S CASUAL
- 62 ARMOR
- 63 WARRANTY & RETURNS





MATERIALS & CONSTRUCTION

RSD apparel borrows deeply from RSD custom bikes. With the subtle

merging of motorcycling heritage and modern components, we've

created the perfect combination of style and function. Our unique materials for main bodies utilize waxed and oiled leathers, waxed cotton and heavy duck cotton plus others, all used in measured combinations.

Our goal is to create a line of riding and living apparel using materials that offer excellent riding comfort and protection without sacrificing everyday wear ability, even when you're not riding.

LEATHER

We use only the finest available hides for our leather and require all our suppliers to be REACH compliant, plus AZO and PCP free. Each RSD leather jacket receives customized treatment and handling which gives every piece its unique, one-of-a-kind finish, with an "already broken in" feel that usually takes years to achieve.



MATTE BUFFALO

- Top Grain Buffalo Leather
- 1mm - 1.2mm thickness
- Pre-oiled leather
- Proven abrasion and Durability qualities
- Water repellent

OILY BUFFALO

- Top Grain Buffalo Leather
- 1mm - 1.2mm thickness
- Pre-oiled leather
- Proven abrasion and Durability qualities
- Water repellent

BLACKSTONE

- Cowhide, Top Grain Leather
- .8mm - .9mm thickness
- Coated leather
- Supple, soft finish
- Water repellent

AIRBORNE

- Cowhide, Top Grain Leather
- .9mm - 1.1mm thickness
- Pre-oiled, washed, hand wax finish
- Water repellent

GT RACER

- Premium Top Grain Cowhide Leather
- 1mm - 1.2mm thickness
- Hand Oiled, Hand Washed and Hand Waxed For Premium Finish
- Tumbled for Smooth, Soft Finish
- Water Repellent

TEXTILE

All textiles we use for our jackets are scrutinized for durability, protection, hand feel and texture. Only the best are chosen or we developed, bringing each piece its unique look and feel without sacrificing performance.



RSD WAXED COTTON

- Authentic waxed cotton, 11.5 oz (final finish)
- 100% Cotton
- Water repellent
- Refinishing capable

CORDURA®/KEVLAR

- 320gsm-67% Kevlar®/33% Cordura®

KEVLAR DENIM

- 12 oz. 70% Cotton, 30% Kevlar™
- Yarn Dyed Denim

DENIM

- 12.5 oz. 100% Cotton
- Yarn Dyed Denim

HEAVY DUCK COTTON

- 12.5 oz. 100% Cotton
- Dry tumble finish
- Water repellent

BRITISH MILLERAIN WAXED COTTON

- Authentic British Millerrain, 10.5 oz (final finish)
- 100% Cotton
- Water repellent
- Refinishing capable

FIT

RSD jackets are built to ride, but still retain everyday comfort. We pay extra attention to getting our fit "just right". Our forward rotated, pre-curved sleeves, flex panels and forward rotated collar openings allow for all day riding while retaining "walk-around" comfort.



AGGRESSIVE FIT

Tailored torso with pre-curved sleeves, conforms to riding position. Snug overall fit.



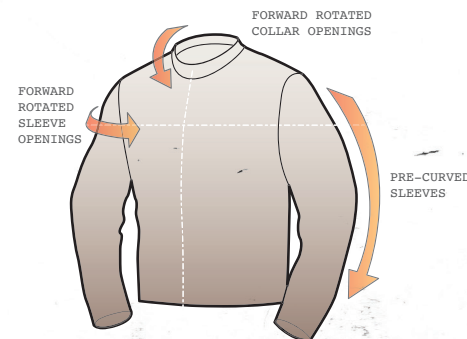
CLASSIC FIT

Pre-curved sleeves and rotated collar, but more room for ease of movement



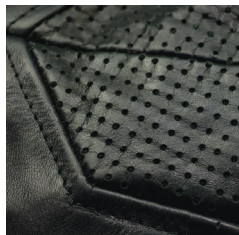
RELAXED FIT

More relaxed fit for range of motion and comfort.



TRIMS & DETAILS

We use only the finest materials and trims available. Each component is chosen or designed for function, comfort, durability, and feel. The details make the difference.



PERFORATED LEATHER



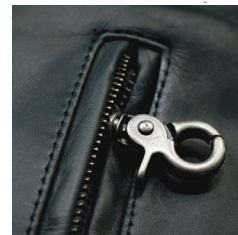
GUSSETED ZIPPERS



CUSTOM POCKET PULLERS



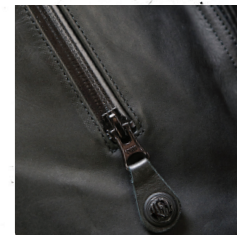
METAL/MESH VENTING



METAL POCKET KEY CLIPS



METAL GROMMET COAT HOOK



WATERPROOF ZIPPERS



CAST METAL MAIN SNAPS



CUSTOM PULLERS



CUSTOM TACK BUTTONS



EMBOSSED BRANDING PATCHES



EMBOSSED BRANDING



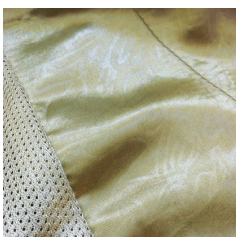
COMFORT TRIMS



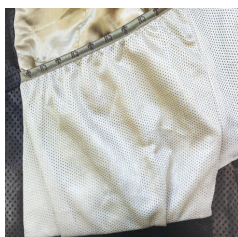
STRATEGIC VENTING

INTERIORS

The interiors of RSD jackets are built for comfort, durability and function.



"NUMBERS" EMBOSS PRINT



STRETCH CARGO POCKET



SECURE DEVICE POCKET



LEATHER COAT HOOK



ZIP LAPEL POCKET



MESH VENTING/SATIN POLY



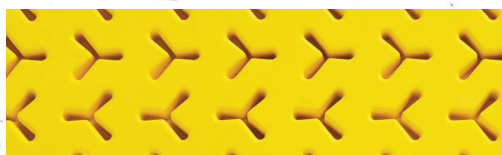
REMOVEABLE LINERS/HOODIES



QUILTED LINING

ARMOR KNOX

Most RSD jacket now come equipped with MICROLOCK™ armor by KNOX®, a global leader in protection technology. Microlock™ is soft and stable and provides superior impact protection in any temperature.



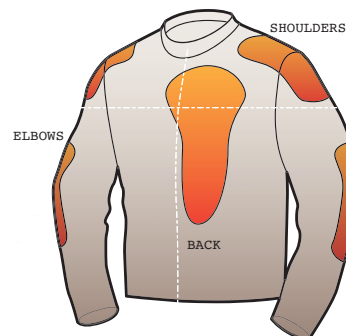
BACK PROTECTOR



ELBOW PROTECTOR



SHOULDER PROTECTOR



SHOULDERS

ELBOWS

BACK

CONSTRUCTION

We pay utmost attention to our construction methods and materials, using only the best nylon and cotton blend thread, durable seam construction and pattern layering techniques. Extensive double or triple stitching and proper pattern assembly ensure durability and protection. Combined with premium quality zippers and closure systems, your RSD jacket should last and function hassle free for the life of the garment.



We make every effort to find and develop some of the most unique leathers available. With a combination of protection, durability, comfort and style we hope you enjoy your RSD leather garment as much as we enjoyed creating it.

MENS LEATHER JACKETS

RONIN RS SIGNATURE

NEW
2019

MEN'S LEATHER JACKETS

The Iconic Ronin re-imagined with elevated protection, construction and technical features.

Often replicated, but never duplicated. The jacket that started it all, the Ronin by RSD now offered in a fully re imagined version as part of the Roland Sands Signature Collection. The DNA of this iconic jacket remains but has been wrapped in a ton of new features. Including an all new premium leather quality, GT Racer. GT Racer is a hand washed, hand waxed and hand finished leather that gives it a pre-worn look and feel. It is soft to the touch and requires very little break in. The leather will age with the rider and develop a natural patina overtime. Additional features include a premium mesh liner that is moisture wicking and antimicrobial, YKK zippers throughout and premium KNOX™ MICROLOCK™ molded armor for superior impact protection.

- GT Racer premium top grain cowhide leather (1.1-mm - 1.3mm)
- Aggressive riding fit
- Cool core mesh liner with moisture wicking properties
- Zippered vents at shoulders and back
- Rotated-pre-curved sleeves
- Cafe style collar w/snap back feature
- WP interior device pocket
- 3 Front zip pockets
- Drop back length
- Perforated leather interior trims
- Sleeve zip pocket, side zipper waist adjuster
- Zip closed cuffs
- Ships with CE-Knox™ elbows and shoulders, with back protector ready pocket
- Colors: Black, Tobacco
- Sizes: S - 3XL



BLACK



TOBACCO





CLASH RS SIGNATURE

NEW
2019

MEN'S LEATHER JACKETS

A technical evolution of RSD's classic perfecto rocker jacket.

The infamous Clash jacket by RSD in an all new, elevated version that brings modern function to this classically inspired jacket design. Part of the Roland Sands Signature Collection, The Clash RS Signature is a blast from the past. Based on the styling of the classic perfecto rocker Jacket the all new Clash keeps that timeless design language but boats a ton of new features. Including an all new premium leather quality, GT Racer. GT Racer is a hand washed, hand waxed and hand finished leather that gives it a pre-worn look and feel. It is soft to the touch and requires very little break in. The leather will age with the rider and develop a natural patina overtime. Additional features include a premium mesh liner that is moisture wicking and antimicrobial, YKK zippers throughout and premium KNOX™ MICROLOCK™ molded armor for superior impact protection.

- GT Racer premium top grain cowhide leather (1.1mm - 1.3mm)
- Aggressive riding fit with relaxed shorty snap collar
- Cool core mesh liner with moisture wicking properties
- Angled front zipper with snap button at top
- Rotated pre-curved sleeves
- Quilt stitch accent at shoulders and elbows
- 3 Front zip pockets
- Drop back length
- Perforated leather interior trims
- Perforated sleeve venting
- Sleeve zip pocket, adjustable waist
- Zip closed cuffs
- Ships with CE-Knox™ elbows and shoulders, with back protector ready pocket
- WP interior device pocket
- Colors: Black, Oxblood
- Sizes: S - 3XL



OXBLOOD



BLACK



JAGGER

NEW
2019

MEN'S LEATHER JACKETS

Multi Season Café styled jacket with quilted accents.

The all new Jagger by RSD is a true 3-1 multi season jacket that has you covered in various conditions. A simple yet sophisticated Café Racer styled jacket, the Jagger is constructed of a premium Matte Buffalo leather that is soft and supple. The Jagger comes equipped with a seam sealed hood that acts like a barrier against for the cold days on the bike, but can be worn separately as a casual piece as well. Remove the hood and you have a classic leather jacket perfect for those mild to warmer days. Additional features include a mesh liner, shoulder intake vents and back exhaust ports, all YKK's zippers and unique quilt stitch detail for aesthetics. The Jagger also comes equipped with KNOX™ MICROLOCK™ molded armor for superior impact protection.

- Premium oiled buffalo leather (1.0 mm - 1.3mm)
- Aggressive riding fit
- Shoulder zip vents
- Cool core mesh liner with moisture wicking properties
- Rotated pre-curved sleeves
- Back gusset w/zippered vents
- Quilt stitch accent at shoulder and back
- Café style collar w/snap back feature
- WP interior device pocket
- 3 Front zip pockets
- Zip closed cuffs
- Sleeve zip pocket, side zipper waist adjustment
- Ships with CE-Knox™ elbows and shoulders, with back protector ready pocket
- Removable/wearable WP soft shell hood
- Elastic cuffs
- Colors: Black, Brown
- Sizes: S - 3XL



BLACK

BROWN





RONIN

MEN'S LEATHER JACKETS

RONIN-n.1.A master-less, wandering Samurai, the vagabond warrior.

The RSD Ronin sets the standard for what a new motorcycle jacket should be. Many have tried in vain to duplicate this jacket, but legends can't be replicated. The Ronin features our specifically developed and exclusive Airborne leather that feels and smells as good as it looks. The hand finished wax, wash and oil finish not only makes each jacket unique, but makes it so it instantly has a broken in feel. Versatile and stylish both on and off the bike, it's the jacket you wear for a night out even when you don't bring your bike along.

- Detailed café style, with shorty snap collar and front zip pockets
- RSD "Airborne" hand finished, washed and oiled/waxed top grain cow hide(.9m-1.1mm thickness)
- Aggressive riding fit, with rotated, pre-curved sleeves, dropped back length and relaxed collar opening
- Perforated leather interior trims
- Perforated sleeve venting
- Sleeve zip pocket, side zipper waist adjust
- Zip close cuffs
- Satin poly lining with custom RSD repeat "numbers" heat emboss
- Soft lined electronics security pocket
- Stretch mesh cargo stuff pockets
- Zip close interior chest pocket
- Armor ready shoulder, elbow and back protector pockets
- Colors: Black, Tobacco
- Sizes: S - 3XL



TOBACCO



BLACK

CLASH

MEN'S LEATHER JACKETS

Classic style. 59.

Classic 1959 styling, the Clash is the perfect blend of a detailed rocker style leather jacket with premium materials and motorcycle functionality. Inspired by the vintage "perfecto" jacket of the 1950's the Clash by RSD offers a ton of unique features that make this jacket an instant classic. Constructed of a specially developed and exclusive Airborne leather that feels and smells as good as it looks, each Clash is unique. Versatile and stylish both on and off the bike. The asymmetrical designed front zipper keeps the that rocker look front and center while the quilted stitched accents and the infamous coffin stitched elbow round out the design. Don't let the looks of the Clash fool you; underneath that rocker styling is a true performance riding jacket.

- Detailed rocker style, with shorty snap collar, offset zipper and front zip pockets
- RSD "Airborne" hand finished, washed and oiled/waxed top grain cowhide (.9mm-1.1mm thickness)
- Aggressive riding fit, with rotated, pre-curved sleeves, dropback length and relaxed collar opening
- Quilted accents, shoulders, lower back
- Reinforced riveted elbows
- Perforated leather interior trims
- Sleeve zip pocket, side zipper waist adjust buckles
- Zip close cuffs
- Satin poly lining with custom RSD repeat "numbers" heat emboss
- Soft lined electronics security pocket
- Stretch mesh cargo stuff pockets
- Zip close interior chest pocket
- Armor ready shoulder, elbow and back protector pockets
- Colors: Black, Tobacco, Oxblood
- Sizes: S - 3XL



BLACK



OXBLOOD



TOBACCO





2017
2018
2019
2020
2021
2022
2023
2024
2025
2026
2027
2028
2029
2030



ROCKINGHAM

MEN'S LEATHER JACKETS

RSD custom quilting in a premium buffalo leather performance chassis.

Classic, sophisticated, premium, and simplistic are just a few keywords that describe the all-new Rockingham jacket by RSD. With aesthetic features like double quilt stitched details and unique sleeve paneling the Rockingham boasts enough style to be worn on or off the bike. While the included Knox® Microlock® armor, 1.2mm thick matte buffalo leather and durable construction will keep you protected. The Rockingham is ready for action.

- Genuine, top grain RSD "Matte Buffalo" leather (1.0-1.2mm thickness)
- Double stitched quilting accents
- Classic riding fit with rotated, pre-curved sleeves, dropped back length, and relaxed collar
- Zip pockets and cuffs
- Side adjustable waist tabs
- Satin poly lining with custom RSD numbers heat emboss
- Soft lined electronics security pocket
- Stretch mesh cargo stuff pockets
- Equipped with CE-1 Knox™ Microlock® armor, elbows and shoulders, with a back armor ready protector pocket
- Colors: Black, Brown
- Sizes: Small - 3XL



BLACK

BROWN





WALKER

MEN'S LEATHER JACKETS

RSD simplistic style and premium warm weather performance.

The Walker Perforated Jacket by RSD features a fully ventilated Matte Buffalo main body for a soft and supple feel with maximum airflow for warm weather riding. This simplistic café styles jacket offer the necessary performance and function to ensure protection on those hot days, and the style and fit for all day wear ability both on and off the bike. Offered in perforated version for warm weather riding.

- Genuine, top grain RSD "Matte Buffalo" leather (1.0-1.2mm thickness)
- Classic riding fit with rotated, pre-curved sleeves, dropped back length and relaxed collar opening
- Classic riding fit with rotated, pre-curved sleeves, dropped back-length, and relaxed collar opening
- Zip pockets and cuffs
- Side adjustable waist tabs
- Satin poly lining with custom RSD numbers heat emboss
- Soft lined electronics security pocket
- Stretch mesh cargo stuff pockets
- Armor ready shoulder, elbow and back protector pocket
- Colors: Black, Brown
- Sizes: S - 3XL



BLACK PERF



BROWN PERF



BLACK



BROWN



Just like our leathers, RSD textile jackets are built to perform and look great both on and off the motorcycle. We source innovative and premium materials to ensure durability, protection and premium hand feel. Only the best is used to develop RSD textile jackets because sacrificing performance is not an option.

MENS TEXTILE JACKETS



CASBAH

MEN'S TEXTILE JACKETS

Punk Rock styling in an all new Wax Cotton chassis.

The Casbah has RSD written all over it. This overt perfect textile jackets is a true rocker. Taking inspiration from a few legacy RSD styles the Casbah is unique style. Constructed mainly of premium RSD waxed cotton, the Casbah also features leather details in key areas for both aesthetics and additional protection in abrasion zones. The exposed zippers give it that "punk rock" vibe while the magnetic collar features allow the rider to increase ventilation. Performance features include shoulder and arm intake vents, back exhaust ports and premium KNOX™ MICROLOCK™ molded armor for superior impact protection.

- 100% Wax cotton main body
- Dakota leather accents
- Aggressive fit with relaxed shorty snap collar
- Zippered shoulder vents
- Cool core mesh liner with moisture wicking properties
- Rotated shoulders, pre-curved sleeves
- Back zippered vents
- Zippered pocket on sleeve
- WP interior device pocket
- Adjustable buckle waist and zip close sleeve cuffs
- Ships with CE-Knox™ elbows and shoulders, with back protector ready pocket
- Colors: Black/Black, Ranger/Mahogany
- Sizes: S - 3XL



BLACK/BLACK



RANGER/MAHOGANY

JOHNNY

NEW
2019

MEN'S TEXTILE JACKETS

Hybrid jacket featuring Waxed Cotton and Premium Leather wrapped in classic styling.

Here's Johnny – a hybrid jacket that gives a nod to a few tried and true RSD Styles. The Johnny features a premium RSD waxed cotton main body and hand finished cowhide sleeves. Both are materials RSD is known for as a brand, but never executed this way on a garment. Styling is very classic where the main body feels like a vest and the sleeves share some design similarities to legacy RSD jackets. The Johnny Offered in 3 colorways and comes equipped with KNOX™ MICROLOCK™ molded armor for superior impact protection.

- 100% Wax cotton main body
- Dakota leather sleeves (.9mm - 1.1mm)
- Snap down collar
- Cool core mesh liner with moisture w/wicking properties
- Rotated shoulders, pre-curved sleeves
- Back zippered vents
- WP interior device pocket
- Zip down and snap front
- Adjustable buckle waist and zip close sleeve cuffs
- Ships with CE-Knox (TM) elbows and shoulders, with back protector ready pocket
- Colors: Black/Black, Charcoal/Black, Ranger/Mahogany
- Sizes: S - 3XL



BLACK/BLACK



RANGER/MAHOGANY



CHARCOAL/BLACK





WAYLON

MEN'S TEXTILE JACKETS

Classic utility styled jacket with premium features.

The Waylon is RSD's interpretation of the classic work jacket. Constructed of heavy weight duck cotton the Waylon is built for the ride. A clever and deliberate design detail is the suede application on the collar, shoulders and upper back that really give the Waylon a nice, premium touch. The front main zipper with snap down storm flap keeps the jacket intact at high speeds and the included KNOX™ MICROLOCK™ molded armor keep the rider protected. Remove the armor and you have a stylish casual jacket.

- 100% Duck cotton
- Suede accents (Content TBD)
- Classic riders fit
- Snap down collar
- Cool core mesh liner with moisture w/wicking properties
- Rotated shoulders, pre-curved sleeves
- Expansion gusset at back
- WP interior device pocket
- Zip down/snap front
- adjustable waist snap and snap close sleeve cuffs
- Ships with CE-Knox (TM) elbows and shoulders, with back protector ready pocket
- Colors: Black/Black, Charcoal/Black, Khaki/Brown
- Sizes: S - 3XL



KHAKI



BLACK



CHARCOAL





TRUMAN

MEN'S TEXTILE JACKETS

Classic waxed cotton enduro jacket with leather accents.

The Truman by RSD is a classic enduro styled, vintage inspired waxed cotton riding jacket with leather accents. A true instant classic, the Truman is a hybrid construction using two proprietary RSD materials, waxed cotton and Dakota leather. RSD waxed cotton is water and abrasion resistant and we have reinforced the abrasion areas on the Truman with oiled Dakota Leather to give it extra durability, and a unique look and feel. Offered in perforated version for warm weather riding.

- RSD Waxed Cotton, water repellent / breathable 11.5oz finished weight
- RSD "Dakota" cowhide leather (.9mm -1.1mm)
- Classic riding fit with rotated, pre-curved sleeves, dropped back length, and relaxed collar
- Genuine leather contrast detail
- Zip front, pockets and cuffs
- Zippered sleeve vents
- Side adjustable waist tabs with metal buckle
- Satin poly lining with custom RSD numbers heat emboss
- Soft lined electronics security pocket
- Stretch mesh cargo stuff pockets
- Armor ready shoulder, elbow and back protector pockets
- Sizes: S - 3XL



RANGER



BLACK



BLACK PERF



BLACK PERF

SQUAD

MEN'S TEXTILE JACKETS

Classic flight jacket with moto functional features.

The RSD Squad jacket perfectly combines iconic flight jacket styling with premium moto functionality. The outer shell is a combination of waxed cotton and spandex for a light and flexible feel with a 100% Kevlar mid liner to provide superior abrasion protection. The inner liner is constructed of a soft satin material that is soft to the touch and rendered in bright orange to cap of the classic flight jacket styling. Additional features include a utility zip pocket on the right sleeve so it's usable on the bike and heavy duty flex ribbing on the cuffs and waist band.

- Waxed cotton Spandex Blend outer shell
- 100% Kevlar mid layer
- Classic orange quilted satin liner
- Utility Zip pocket on sleeve that fits most smart phones
- Front zip welt pockets
- Inside zip storage pocket
- Ships with CE approved level 1 elbows & shoulder armor included
- Armor ready back protector pocket
- Relaxed fit
- Sizes: S - 3XL



BLACK



FATIGUE GREEN





TRENT

MEN'S TEXTILE JACKETS

Premium, technical textile rider's hoody jacket

Classic café style in a stylish hoody jacket, Trent Jacket by RSD is as versatile as it is technical. Constructed using a durable Kevlar & Cordura fabric blend the Trent jacket provides superior abrasion protection in a lightweight chassis. Shoulder intake vents and a large back vent keep the rider cool in warm conditions and the aqua guard zipper by YKK keeps the elements out while in wet weather. And for style points, the Trent also features a removable heavy-duty fleece hood. Premium, technical rider's hoody jacket.

- Fully lined satin poly with mesh inserts
- Outer-shell - 320 gsm - 67% Kevlar® / 33% Cordura
- Zip close front
- Zip close cuffs with snaps
- Café snap collar
- Zip close vents
- Inside zip storage pocket
- Ships with CE approved level 1 elbows & shoulder armor included
- Armor ready back protector pocket
- Classic fit with pre-curved sleeves, rotated shoulders
- Colors: Black
- Sizes: S - 3XL



BLACK

HEFE

MEN'S TEXTILE JACKETS

Versatile classic denim jacket that can be worn as a vest.

The Hefe is an evolution of the popular Honcho Jacket. With all new features that elevate this styles form and function. Featuring heavy weight 70/30 denim / Kevlar blend main body that provides top-notch abrasion protection. Articulated pre-curved sleeves in premium buffalo feature are fully removable, which allows the Hefe to be a 2 in 1 design that can be worn as a jacket or a vest. Snap down collar, leather accents and classic denim jacket styling, the Hefe is perfect for the rider looking for a versatile jacket that looks great both on and off the bike. Versatile classic denim jacket that can be worn as a vest

- Matte Buffalo leather (1.0-1.1mm thickness) sleeves
- Heavy weight Kevlar / waxed denim
- Rotated pre-curved sleeves
- Quilted satin poly mesh body lining and soft lined electronic security pocket
- Center front rubberized shank snaps
- Front welt zip pockets
- Adjustable waist tabs and zip close sleeve cuffs
- Back flex gussets
- Ships with CE approved level 1 elbows & shoulder armor included. Armor ready back protector pocket
- Classic fit with pre-curved sleeves, rotated shoulders
- Colors: Black, Indigo
- Sizes: S - 3XL



BLACK

INDIGO





BRONSON

MEN'S TEXTILE JACKETS

An instant classic, a working-class staple, the denim jacket.

An all-American jacket design that has stood the test of time. The Bronson Jacket by RSD is all of these things but with specific features that make it motorcycle functional yet all day wearable. Features like rotated, pre-curved sleeves, front zip closure, action back gussets and armor pockets make the Bronson ready for action while the classic button front storm flap, genuine leather collar and silicone washed denim ensure it will look just as good off the bike.

- 10.5oz indigo denim with silicone wash
- Classic riding fit with rotated, pre-curved sleeves, dropped back length, and relaxed collar opening
- Genuine leather collar detail
- Zip front and pockets
- Action back gussets for ease of motion
- Armor ready shoulder, elbow and back protector pockets
- The Bronson has classic riding fit and wears true to size
- Colors: Indigo
- Sizes: S - 3XL



INDIGO





RAMONE VEST

MEN'S TEXTILE JACKETS

Durable heavy weight duck cotton vest in a classic riding fit.

The Ramone vest by RSD is the perfect blend of classic style and function. With the ability to be used for layering or with a tee shirt in warmer conditions the Ramone vest is ready to ride. Featuring a vintage inspired design with key details that make this fashionable vest motorcycle functional. Constructed of heavy weight duck cotton that is abrasion resistant, zip front to keep the jacket closed while riding and snap front flap for that classic look. The soft corduroy collar detail that provides extra comfort. Durable heavy weight duck cotton vest in a classic riding fit.

- 18oz heavy weight cotton duck
- Classic riding fit
- Corduroy collar detail
- Zip front and pockets
- Action back gussets for ease of motion
- Side adjustable waist tabs
- Satin poly lining with custom RSD numbers heat emboss
- Soft lined electronics security pocket
- Stretch mesh cargo stuff pockets
- Armor ready for back protection
- Colors: Khaki, Black, Charcoal
- Sizes: S - 3XL



BLACK



KHAKI



CHARCOAL

RINGO VEST

MEN'S TEXTILE JACKETS

Proven waxed cotton in a great fitting multi-purpose quilted vest.

The Ringo Vest is constructed of premium RSD waxed cotton, alternative to leather, is lighter in weight, but offers water repellent and abrasion resisting similar to cowhide. The Ringo is the perfect vest for layering or just as good when worn with a tee shirt underneath. The Ringo boasts a ton of style with a ribbed, welders style collar and quilted stitch accents. Add in the 2-way zipper function, plenty of storage pockets and back armor pockets and you have a solid vest ready for riding action.

Water repellent / breathable waxed cotton (11.5oz)

Classic riding fit with dropped back length and rib knit collar

Quilted all over detail

2-way YKK® front zipper

Adjustable waist tabs

Zip close pockets

Zip close interior pockets for storage

Satin poly lining with custom RSD repeat "numbers" heat emboss

Colors: Black, Ranger

Sizes: S - 3XL



RANGER



BLACK





DURO PERF

MEN'S TEXTILE JACKETS

Experience the historically proven comfort, durability and function of authentic waxed cotton, perforated for warm weather riding comfort and protection.

With a historically proven design and chassis, The Duro Perf features innovative laser perforated waxed cotton panels that provide airflow while maintaining the tensile strength and abrasion resistance of the material. The perforated panels are strategically placed and cut by laser. The Duro is an evolution of the popular Tracker Jacket but re-imagined in this all new ventilated version. Experience the historically proven comfort, durability and function of authentic waxed cotton, perforated for warm weather riding comfort and protection.



BLACK

RANGER

RAMONE VEST PERF

MEN'S TEXTILE JACKETS

Lightweight perforated waxed cotton vest.

The Ramone perf vest is a no-frills staple that every rider should have in their gear arsenal. With it's classic styling the Ramone perf vest features innovative laser perforated waxed cotton panels that provide airflow while maintaining the tensile strength and abrasion resistance of the material. The perforated panels are strategically placed and cut by laser. Perfect for layering or as a stand-alone piece on those hot summer days on the road.

- RSD Laser Perforated Waxed Cotton, (11.5oz finished weight)
- Water repellent / breathable
- Snap down collar
- Classic fit
- YKK® Zip front and side pockets
- Side adjustable waist tabs
- Cool Core mesh lining
- Soft lined electronics security pocket
- Stretch mesh cargo stuff pockets
- Armor ready back protector pocket
- Colors: Black, Ranger
- Sizes: S - 3XL



BLACK



RANGER





The RSD technical lifestyle collection blends innovative fabrics with stylized fit to ensure these garments work equally well on and off the motorcycle. From denim that fits great and protects your hide when things go sideways to premium flannels and hoodies that are perfect for layering or wearing for quick rips around town, RSD has you covered.

MENS TECHNICAL LIFESTYLE

VINCENT HOODY

MEN'S TECHNICAL LIFESTYLE

Multi-purpose riders hoody.

Imagine your favorite hoody with enough built in protection to ride in. The Vincent Hoody is just that. The outer fabric is a Kevlar Coolmax blend that provides abrasion resistance and moisture control while the liner is a Cordura Nyco material that increases slide protection. The Vincent also features a hidden zipper pocket in the kangaroo pouches and a heavy duty YKK aqua guard main zipper.

- Coolmax/Aramid Knit Shell
- Cordura®NYCO body and sleeve lining
- Zip close front
- Rib knit cuffs and hem
- Kangaroo pocket lined with Cordura® NYCO
- Armor ready shoulder, elbow and back protector pockets
- Classic Riders Fit
- Colors: Black
- Sizes: S – 3XL



BLACK





GORMAN FLANNEL

MEN'S TECHNICAL LIFESTYLE

Premium riders flannel with built in protection.

Looking for a classic flannel shirt that will actually provide protection when things get gnarly? The Gorman by RSD has you covered. With a fully Kevlar lined construction the Gorman provides the abrasion resistance you would not expect from a flannel shirt. Additional features include a shorty front zip with a snap down flap to keep the flannel closed when you're getting on the gas. Black ops RSD trims, a quilted liner to block wind and provide some warmth and a riders fit. The Gorman can be fully armored so it's great for layering with a vest or just wearing it as a jacket.

- RSD 100% Cotton Flannel (lightly brushed)
- Quilted body lining with Aramid
- Plain satin poly sleeve lining with Aramid
- Center Front Zippered closure with snaps
- Inside chest pocket
- Snap down collar
- Snap down front pockets
- Armor ready shoulder, elbow and back protector pockets
- Classic Fitted Riders Style
- Colors: Red, Black/Grey
- Sizes: S - 3XL



BLACK/GRAY



RED

DALTON

MEN'S TECHNICAL LIFESTYLE

Classic five pocket jean with riders fit and superior protection.

The Dalton Jean has a ton of great features that will keep your game tight both on and off the bike and provide all day wear-ability. The Dalton Jean has a slim / straight low rise fit, button fly and a supple raw denim hand that you would expect from a premium pair of jeans. We have created a unique material that increases protection but still wears like your favorite pair of jeans but with motorcycle functionality. The denim is comprised of 70% 12.5 oz cotton and is reinforced with 30% Dupont™ Kevlar® that is woven together to create a tough material that provides abrasion, heat and slide protection.

This material also keeps the fit consistent and the Dalton will retain their shape after any wash cycle. We then laced out the Dalton Jean with the very best in construction features like reinforced triple stitching on the inseam and back rise and a reinforced double layer back pant cut off that to ensure top notch impact burst protection. Lastly, we added quilt stitched details and custom RSD trims that have become a staple in premium RSD Apparel products.

- 12 oz 70% Cotton, 30% Kevlar®
- Slim straight fit with low rise
- Button fly
- Reinforced / triple stitching on inseam and back rise
- Reinforced / double layer back pant cuff
- Quilt stitching detail
- Custom RSD trims
- Sizes: Waist, 28", 30", 32", 34", 36", 38"



INDIGO





RSD gloves merge the best of performance, comfort and style. Tough but supple grade A top grain cowhide and performance textiles combined with protective strategic padding and great fit will make them your favorite pair(s) in your riding closet.

MENS GLOVES



BLACK



BLACK

VALANCE NEW 2019

MEN'S GLOVES

If Darth Vader wore moto gloves, it would be the RSD Valance Glove.

- WR cow nappa leather
- Goat leather
- Hipora (TM) Waterproof/Breathable liner
- Fully lined cool core mesh w/wicking properties
- Ergonomic pre-curved fit
- Flex ribbing
- Connect touch
- Reflective TPR on cuff
- Colors: Black
- Sizes: S - 3XL



BLACK/WHITE



BLACK



BLACK/WHITE



TOBACCO

BERLIN NEW 2019

MEN'S GLOVES

Sport inspired premium leather riders glove with armored knuckles.

- Cowhide leather
- Reinforced leather palm and abrasion areas
- 100% tricot lining
- Pre-curved, articulated fit
- Reinforced padded palm
- Cell touch capable
- Flex knuckles
- Armored Knuckles
- Elastic grip on fingers
- Wrap elastic wrist closure
- Colors: Black, Tobacco, Black/White
- Sizes: S - 3XL





BLACK/GREY

BRONZO NEW 2019

MEN'S GLOVES

Riders glove for super-hero's.

- Cowhide leather
- 100% tricot lining
- Pre-curved fit
- Flex ribbing
- Cell touch capable
- Padded finger knuckles
- Zip elastic wrist closure
- Colors: Black, Tobacco, Black/White
- Sizes: S - 3XL



BLACK

BLACK/WHITE

TOBACCO



TOBACCO

ROURKE NEW 2019

MEN'S GLOVES

Classic shorty glove with modern features.

- Cowhide leather
- 100% tricot lining
- Pre-curved fit
- Flex ribbing
- Cell touch capable
- Padded finger knuckles
- Zip elastic wrist closure
- Colors: Black, Tobacco, Black/White
- Sizes: S - 3XL



BLACK

BLACK/WHITE

TOBACCO



BLACK

SPRINGFIELD NEW 2019

MEN'S GLOVES

Classic moto style work glove with sublimated graphics

- Cowhide Leather palm
- Stretch textile sublimated top hand
- 100% tricot lining
- Pre-curved fit
- Work style short glove
- Cell touch capable
- Flex rib knuckles
- Elastic wrist
- Colors: Black
- Sizes: S - 3XL



BLACK



WHITE

WELLINGTON NEW 2019

MEN'S GLOVES

All leather, comfortable work styled glove

- Cowhide Leather
- 100% tricot lining
- Pre-curved fit
- Work style short glove
- Cell touch capable
- Flex rib knuckles
- Elastic wrist
- Colors: Black, Tobacco
- Sizes: S - 3XL



BLACK

TOBACCO





TOBACCO



TRUMAN

MEN'S GLOVES

Waxed cotton leather riders glove.

- 12oz Waxed Cotton
- Pre-Curved Fit
- Brushed Poly Tricot Lining
- Cowhide Double Leather Palm
- Leather Flex Ribbing
- Perforated Fourchettes
- Cell Touch
- Custom Slider For Closure
- Colors: Ranger/Tobacco, Black/Black
- Sizes: S - 2XL



RANGER/TOBACCO



BLACK/BLACK



BLACK/WHITE



STRAND

MEN'S GLOVES

Classic moto inspired lightweight glove.

- Stretch Mesh Textile Glove
- Clarino® Palm
- Leather Trim
- Pre-Curved Fit
- Padded Palm
- Neoprene Cuffs with Velcro Custom Closures
- Cell Touch
- Silicone Grip
- Colors: Black, Black/White
- Sizes: S - 2XL



BLACK



BLACK/WHITE



RSD footwear borrows inspiration from our premium leather jackets, merging the best materials available with technical features and timeless design. Products that look amazing and also performs on the motorcycle.

MENS FOOTWEAR



FRESNO NEW 2019

MEN'S FOOTWEAR

RSD's take on a skate inspired high top with performance rider features and protection.

The Fresno Riding Shoe by RSD combines the classic look and feel of an old-school skateboard shoe with modern motorcycle functionality and protection. Only the finest quality top grain cowhide is used to construct the upper and the reinforced ankle, toe box and heel cup will keep you protected. A fully waterproof membrane keeps you dry from the elements and a reinforced, textured shift pad and CE approved sole ensures durability.

- Top Grain Cowhide Upper
- Reinforced heel cup, ankle and toe box
- Reinforced shank
- Abrasion resistant shift pads
- CE approved cup sole
- Hipora ® waterproof membrane
- RSD multi density "Cheater" Insole
- Reflective lightning bolt
- Waxed laces
- Colors: Black/Black, Whiskey/Black, Black/Gum
- Sizes: (US) Men's 8, 8.5, 9, 9.5, 10, 10.5, 11, 12, 13



BLACK



BLACK/GUM



TOBACCO

MOJAVE

MEN'S FOOTWEAR

Classic boot with performance rider features and protection.

The Mojave boot follows the heritage of our proven jackets, combining the ideal blend of function and classic styling. Every minute detail was considered in the development of this top quality boot to ensure the final product not only performed, but also looks great both on and off the bike. Only the best materials and premium protective technologies were used to construct the Mojave boot. We utilized beautiful top grain cowhide leather for the upper, strategic molded protective inserts in the heel, mid-foot and toe box, a reinforced shank and a hi-grip sole by Vibram™ that is oil/chemical resistant. The waxed laces and double layer protective shift pad ensure durability and provide superior comfort. We added a Hipora™ waterproof and moisture wicking liner and developed the proprietary triple density removable Cheater insole to provide unparalleled cushion and support.

The Mojave boot is the real deal, and is sure to become your new favorite boot.

- Genuine cowhide leather upper
- Oil resistant, slip resistant Vibram® proven performance-out-sole Hipora® waterproof barrier with gusseted tongue construction
- Comfortable RSD custom multi-density removable insole
- Rigid arch/ shank
- Waxed laces
- Reinforced toe box, heel cup and sides
- 3M™ Scotchlite™ reflective detail
- Colors: Black, Whiskey, Oxblood, Gray
- Sizes: (US) Mens 8, 8.5, 9, 9.5, 10, 10.5, 11, 12, 13



OXBLOOD



GRAY



BLACK





ACCESSORIES



RANGER/BLACK



BLACK/BLACK

GTFO BACK PACK

ACCESSORIES

Classic yet functional, multipurpose riders bag.

- 100% Waxed Cotton main structure
- 100% Nylon Contrast and webbing
- Back sleeve for Sissy Bar mount
- Compressions straps
- Padded Laptop sleeve
- Inner organizer
- Sternum strap
- Waterproof outer device pockets
- Side Zip pockets
- Tool pockets
- 980D coated Poly bottom
- Detachable / stow able shoulder straps
- Extra webbing straps with dura-flex buckle for motorcycle mounting
- Waterproof zippers
- Colors: Black/Black, Ranger/Black





RANGER



BLACK

GTFO BAR BAG

NEW
2019

ACCESSORIES

Everything you need, and nothing you don't.

- 100% Wax cotton
- 100% Nylon Contrast
- Waterproof polyester inner bag
- Top load quick access for cards, glasses and phone
- Zip top/front main access w/water proof bag
- Side zip/pocket pouch
- Internal organizers
- Small tool pocket
- Wrap around clinch straps w/buckles
- Removable Velcro loops
- Colors: Black, Ranger



GTFO TOOL ROLL

NEW
2019

ACCESSORIES

Classic materials, meets modern construction.

- 100% Wax cotton
- Wings leather for piping
- 100% Nylon lining
- Multiple organizer pockets
- Webbing and buckle adjustable closures
- Mounting loops
- Colors: Black, Ranger



BLACK

RANGER



BLACK



RANGER



TORRANCE WALLET

NEW
2019

ACCESSORIES

Premium wallets constructed of RSD waxed cotton and leather.

- 100% Wax cotton
- Wings leather trim
- RSD Snap closure
- Leather corded chain with snap loop
- Colors: Black, Ranger

LYNWOOD WALLET

NEW
2019

ACCESSORIES

Premium wallets constructed of RSD waxed cotton and leather.

- 100% Wax cotton
- Wings leather trim
- RSD Snap closure
- Leather corded chain with snap loop
- Colors: Black, Ranger



BLACK

RANGER

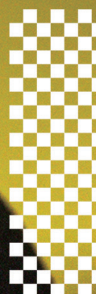
SLAUSON WALLET

NEW
2019

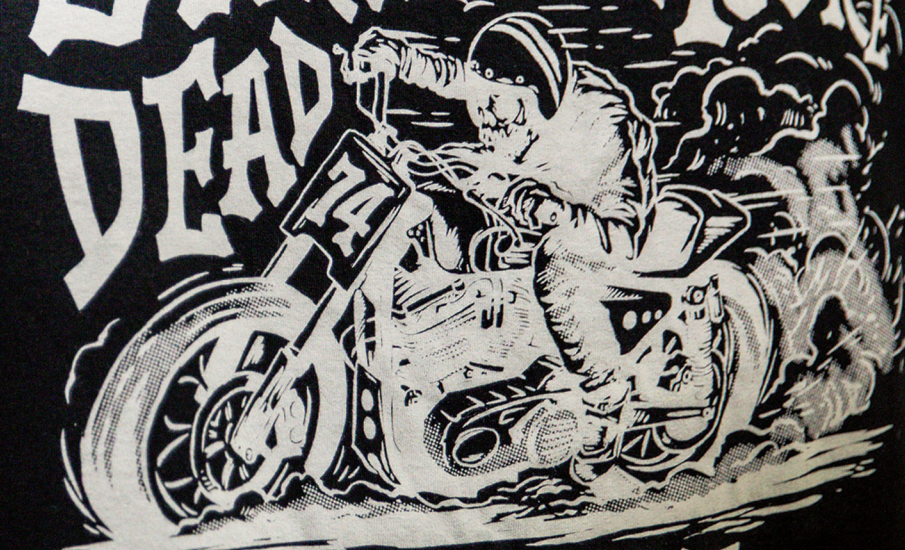
ACCESSORIES

- Top Grain Leather
- Fold / Zipper close
- waxed cotton lined
- Credit card slots
- Bill pocket
- Quilted Accents
- Custom RSD trims
- Size: 4.5" x 3.75"
- Colors: Ranger, Black





SHRED TILL YOU'RE
DEAD



— ROLAND SANDS DESIGN —



ALL RSD TEES FEATURE:

- Cotton premium tee
- 145gms, 100% cotton
- Print graphic
- Traditional crew neck with a slim fit
- Tag-less neck label
- Custom RSD loop label detail
- Available IN sizes: S - 2XL

CORPO TEE



BLACK

SPEEDSHOP TEE



BLACK

WFO TEE



BLACK

VINTAGE WHITE

NAVY

SUPER HOOLIGAN TEE



BLACK

NAVY

CARDINAL RED

SPILLS TEE



BLACK

NAVY

HOOLIGAN EAGLE TEE



BLACK

VINTAGE WHITE

HOOLIGAN EAGLE ZIP HOODY



BLACK

SUPER HOOLIGAN ZIP HOODY



BLACK

CLOVER CAP



BLACK

SPEEDSHOP CAP



BLACK

CORPO CAP



BLACK

CORPO BEANIE



BLACK







Making a statement is an under-statement when it comes to our women's jackets. Our unique finishes and treatments ensure that your jacket is a one-of-a-kind. Throw in a proven track record for performance, protection and durability and you have a beautiful hand crafted functional piece of art to ride with that is as unique as you are.

WOMAN'S LEATHER JACKETS



MIA

NEW
2019

WOMEN'S LEATHER JACKETS

Cafe styled hoody jacket with multi seasonal features.

Meet MIA. She's got attitude, but she's ready for whatever you throw at her. Classic Café Racer styling on the outside, with a removable and separately wearable waterproof hoody on the inside. The MIA is a 3-1 multi season jacket with all of the right features. A clean A-sym front zipper are featured on both the jacket and the hoody and simple yet refined quilt stitch details on the jacket give it just the right amount of styling. The Mia also features Flex ribbing on the back sides and elbows help with articulation and fit. Run it with the hoody for those colder / damp days and without for mild to warm conditions. The MIA also comes equipped with premium KNOX™ MICROLOCK™ molded armor for superior impact protection.

- Premium oiled buffalo leather (1.0mm-1.2mm)
- Aggressive riding fit
- Shoulder zip vents
- Cool core mesh liner with moisture w/wicking properties
- Rotated pre-curved sleeves
- Back gusset w/zippered vents
- Quilt stitch accent at shoulder and back
- WP interior device pocket
- 3 Front zip pockets
- Zip closed cuffs
- Sleeve zip pocket, side zipper waist adjusts
- Ships with CE-Knox (TM) elbows and shoulders, with back protector ready pocket
- Removable/wearable WP soft shell hoodie
- Elastic cuffs
- Colors: Black, Brown
- Sizes: XS - 2XL



BLACK

BROWN

MAVEN

WOMEN'S LEATHER JACKETS

Great fitting riders jacket.

By definition, a maven is a trusted expert in a particular field who seeks to pass knowledge on to others. It also proved to be the perfect name for our latest leather jacket. We have taken all the knowledge gained from producing instant classics in our men's jacket to develop the Maven Jacket for women. Styled after the iconic men's Ronin Jacket, The Maven is a simplistic café racer style jacket that is form fitted and plenty feminine. Constructed using Airbone leather, our most premium cowhide offering. An adjustable zip waist and comfort flex panels under the arms at the chest enable women riders to further tailor the Maven to their form. Pre-curved sleeves, relaxed collar and a dropped back are part of the performance riding fit designed into the jacket.

- Detailed, fitted café style, chest flex panels, with shorty snap collar and front zip pockets
- "Airborne" hand finished, washed and oiled/waxed top grain cowhide (.9mm-1.1mm thickness)
- Aggressive riding fit with rotated, pre-curved sleeves, dropped back and relaxed collar
- Perforated leather interior trims and sleeve venting
- Sleeve zip pocket
- Side zipper waist adjust
- Zip close cuffs
- Satin poly lining with custom RSD repeat "numbers" emboss
- Soft lined electronics security pocket
- Stretch mesh cargo stuff pockets
- Zip close interior chest pocket
- Armor ready shoulder, elbow and back protector pockets
- Colors: Tobacco, Black, Oxblood
- Sizes: S - 2XL



TOBACCO



BLACK



OXBLOOD





RIOT

WOMEN'S LEATHER JACKETS

Classic cafe style, her way.

Sleek, sexy and built for the ride. The Riot is for the ladies who are ready to cause a disturbance. A rocker jacket built for her that looks just as good on the bike as it does off the bike. Made of premium Blackstone top grain cowhide that is soft and supple the Riot is durable and abrasion resistant. The asymmetrical front zipper screams style and the quilted stitch accents bring just the right amount of femininity to this vintage styled café jacket.

- "Blackstone" supple top grain cowhide (.8mm-.9mm thickness)
- Shorty snap collar, offset zipper and front zip pockets
- Aggressive riding fit with rotated, pre-curved sleeves, dropped
- back length and relaxed collar opening
- Quilted accent details
- Perforated leather interior trims
- Zip close side and cuffs
- Zip close interior chest pocket
- Satin poly lining with custom RSD repeat "numbers" heat emboss
- Stretch mesh cargo stuff pockets
- RSD custom trims
- Armor ready shoulder, elbow and back protector pockets
- Colors: Black, Oxblood
- Sizes: S - 2XL



OXBLOOD



BLACK





TRINITY

WOMEN'S LEATHER JACKETS

Cleanly styled classic quilted ladies jacket

The Trinity jacket blends premium fashion with motorcycle function. This versatile jacket can be worn on ladies night out on the town, or when your carving canyons with the throttle wide open. The Trinity Jacket features a semi-aggressive performance riding fit, premium oily buffalo leather that is soft and supple and quilt stitched accents that give it just the right amount of attitude.

- Genuine, top grain RSD "Matte Buffalo" leather (1.0-1.1mm thickness)
- Quilted detail on shoulders
- Adjustable zip waist, zip close cuffs, interior stuff pocket
- Armor ready shoulder, elbow and back protector pockets
- Pre-curved sleeves, rotated shoulders
- Performance riding fit
- Colors: Black, Brown, Merlot
- Sizes: XS - 2XL



BLACK



BROWN



MERLOT

GINGER

WOMEN'S LEATHER JACKETS

Utilitarian 3/4 riding jacket.

The RSD Ginger women's jacket, a true utilitarian style with just the right amount of femininity. The jacket is constructed of premium British Millerrain waxed cotton that is water repellent and has a soft and supple feel yet still offers top-notch protection. The classic fit and 3/4 length allow this jacket to be very versatile and its fully adjustable waist means you can dial in the fit just right. Plenty of storage pockets on the Ginger for all of her pretty things.

- British Millerrain 10.5oz Waxed Cotton
- Classic riding fit with rotated, pre-curved sleeves, mid length, and relaxed collar opening
- Genuine leather contrast detail
- Zip front and cuffs
- Plenty of storage pockets
- Side adjustable waist tabs with metal buckle
- Satin poly lining with custom RSD numbers heat emboss
- Soft lined electronics security pocket
- Stretch mesh cargo stuff pockets
- Armor ready shoulder, elbow and back protector pockets
- Colors: Black, Red
- Sizes: S - 2XL



BLACK



RED





RSD women's gloves have been developed specifically for the woman rider. Feminine design cues, fit, protection and style are perfectly blended in this small but compelling collection.

WOMENS GLOVES



BLACK



RIOT

WOMEN'S GLOVES

Quilted leather riding glove.

- Quilted detailed leather glove with great fit
- Top Grain cowhide leather construction
- Reinforced double layers in protective areas
- Comfort riding fit, with pre-curved grip
- Low profile hook'n'loop tab close
- Custom RSD embossed branding
- Colors: Black, Oxblood, Tobacco
- Sizes: S - XL



OXBLOOD



TOBACCO



BLACK



OXBLOOD



GEZEL

WOMEN'S GLOVES

Shorty function.

- Top Grain Cowhide
- Short zip/strap close
- Flex ribbing
- Reinforced and padded palm
- Pre-curved ergonomic fit
- Padded finger knuckles
- Low profile hook'n'loop tab close
- Custom RSD embossed branding
- Colors: Oxblood, Tobacco, Black
- Sizes: S - XL



TOBACCO



BLACK



OXBLOOD





60



CHARCOAL HEATHER

RIDE 'EM ZIP HOODY

WOMEN'S APPAREL

- 290gm 80/20 cotton/poly zip front hoody
- Print graphic
- Comfy fit
- Custom RSD loop label detail
- Colors: Charcoal heather
- Sizes: S – 2X



BLACK



LIGHT HEATHER GRAY

RIDE 'EM TANK

WOMEN'S APPAREL

- 145gms, cotton/poly/rayon blend
- Print graphic
- Tag-less neck label
- Custom RSD loop label detail
- Colors: Heather, Black
- Sizes: LIGHT S – 2XL





ARMOR

Most RSD jacket now come equipped with MICROLOCK™ armor by KNOX®, a global leader in protection technology. Microlock™ is soft and stable and provides superior impact protection in any temperature.



SHOULDER ARMOR

ARMOR

KNOX® MICROLOCK™ molded
Repeat performance for multiple impacts
Lightweight and flexible
Soft and stable
Fits all RSD jackets with armor ready pockets
CE rated 1621-1:1997
One size / Sold as a pair



ELBOW ARMOR

ARMOR

KNOX® MICROLOCK™ molded
Repeat performance for multiple impacts
Lightweight and flexible
Soft and stable
Fits all RSD jackets with armor ready pockets
CE rated 1621-1:1997
One size / Sold as a pair



BACK PROTECTOR

ARMOR

KNOX® MICROLOCK™ molded
Repeat performance for multiple impacts
Lightweight and flexible
Soft and stable
Fits all RSD jackets with armor ready pockets
CE rated 1621-1:1997
One size

MEN'S ARMOR KIT

KNOX® MICROLOCK™ molded
Repeat performance for multiple impacts
Lightweight and flexible
Soft and stable
Fits all RSD jackets with armor ready pockets
CE rated 1621-1:1997
One size
One pair shoulder, one pair elbow, one back protector



WOMEN'S ARMOR KIT

KNOX® MICROLOCK™ molded
Repeat performance for multiple impacts
Lightweight and flexible
Soft and stable
Fits all RSD jackets with armor ready pockets
CE rated 1621-1:1997
One size
2 pair's shoulder, , one back protector



WARRANTY & RETURN INFORMATION

RSD Limited Warranty:

RSD Apparel is warranted against defects in material and workmanship from the original date of purchase for a period of five (5) years for leather jackets and one (1) year for textile jackets, boots and leather gloves. RSD Apparel will, within the first ninety (90) days of purchase, replace the item if after inspection the garment is deemed to be not in conformance with our standards. After ninety (90) days, the warranty is limited to the repair of the parts and the necessary labor and services to repair the item. If the item after inspection is deemed non-repairable, RSD will replace the item or if item is discontinued or not available, an item of equal value at RSD discretion. Only the original purchaser of this product is covered under this limited warranty. This warranty is non-transferable. Original proof of purchase is required.

How To Return:

Please return your product to the authorized retailer from whom you purchased it from, along with your original receipt. Upon inspection the retailer at its discretion will determine if the products eligible under our limited warranty. If deemed warranted, the retailer will return it to RSD for inspection where at our discretion the item will be repaired or replaced. No other expense will be incurred by you.

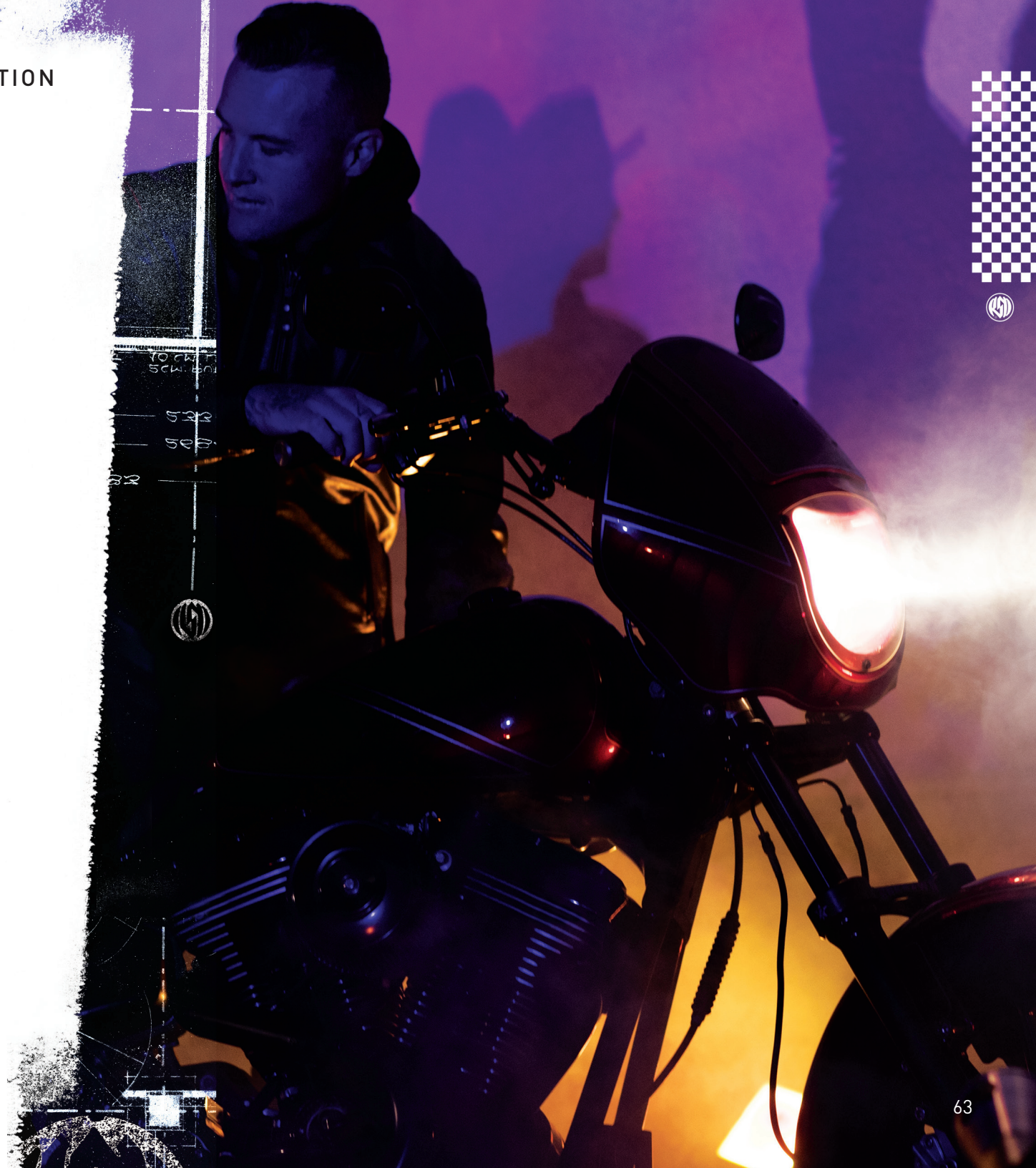
This limited warranty does not cover changes to the color of the leather/textile, scratches, tears, or other damage caused by normal wear and tear, accident damage or improper care or cleaning.

For customer support or dealer inquiries, please contact us:

Email: apparel@rolandsands.com

Call: 855-563-7943

Fax: 949-325-0944





10571 LOS ALAMITOS BLVD., LOS ALAMITOS CALIFORNIA 90720 USA
apparel@rolandsands.com / Ph: 855-563-7943 / www.rolandsands.com